

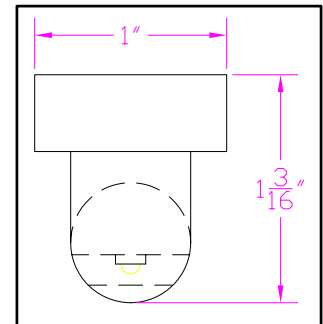
**IES INDOOR REPORT
PHOTOMETRIC FILENAME : LLI040907H.IES**

DESCRIPTION INFORMATION (From Photometric File)

IESNA:LM-63-2002
 [TEST] LLI 0409-07H
 [TESTLAB] LIGHT LABORATORY INC
 [ISSUEDATE] 4/13/2009
 [MANUFAC] BARTCO LIGHTING
 [LUMCAT] Re-LT5-G3-5'/U50
 [LUMINAIRE] 58-15/16"L. X 1"W. X 1-3/16"H. T5 LAMP TYPE LED LINEAR FIXTURE
 [MORE] 5-1/2"SPACING, 10 COOL WHITE LEDS
 [MORE] WITH 500mA MODE
 [BALLASTCAT] BARTCO LTG. Re-DR-UNV-10
 [BALLAST] 120/277VAC, CONSTANT CURRENT;750mA LED DRIVER
 [LAMPPOSITION] 0,0
 [LAMPCAT] COOL WHITE LED
 [OTHER] INDICATING THE CANDELA VALUES ARE ABSOLUTE AND
 [MORE] SHOULD NOT BE FACTORED FOR DIFFERENT LAMP RATINGS.
 [_INPUT] 120VAC, 207.2mA, 21.0W

CHARACTERISTICS

Total Rated Lamp Lumens	N.A. (absolute photometry)
Total Luminaire Efficiency	N.A.
Luminaire Efficacy Rating (LER)	N.A.
Total Luminaire Watts	21
Ballast Factor	1.00
CIE Type	Direct
Spacing Criteria (0-180)	1.46
Spacing Criteria (90-270)	1.30
Spacing Criteria (Diagonal)	1.46
Basic Luminous Shape	Rectangular w/Sides
Luminous Length (0-180)	4.18 ft
Luminous Width (90-270)	0.04 ft
Luminous Height	0.01 ft



LUMINANCE DATA (cd/sq.m)

Angle In Degrees	Average 0-Deg	Average 45-Deg	Average 90-Deg
45	27676	22074	19356
55	20898	15102	13634
65	2877	2972	5944
75	3941	2834	3857
85	4310	2428	1722

IES INDOOR REPORT
PHOTOMETRIC FILENAME : LLI040907H.IES

CANDELA TABULATION

	<u>0.0</u>	<u>22.5</u>	<u>45.0</u>	<u>67.5</u>	<u>90.0</u>
0	372	372	372	372	372
5	421	409	378	350	343
15	413	407	378	353	344
25	387	389	362	344	334
35	356	353	333	312	306
45	305	304	286	270	266
55	187	183	169	157	165
65	19	21	27	35	60
75	16	15	19	25	30
85	6	8	10	9	9
90	0	5	6	4	0
95	0	0	0	0	0
180	0	0	0	0	0

IES INDOOR REPORT
PHOTOMETRIC FILENAME : LLI040907H.IES

ZONAL LUMEN SUMMARY

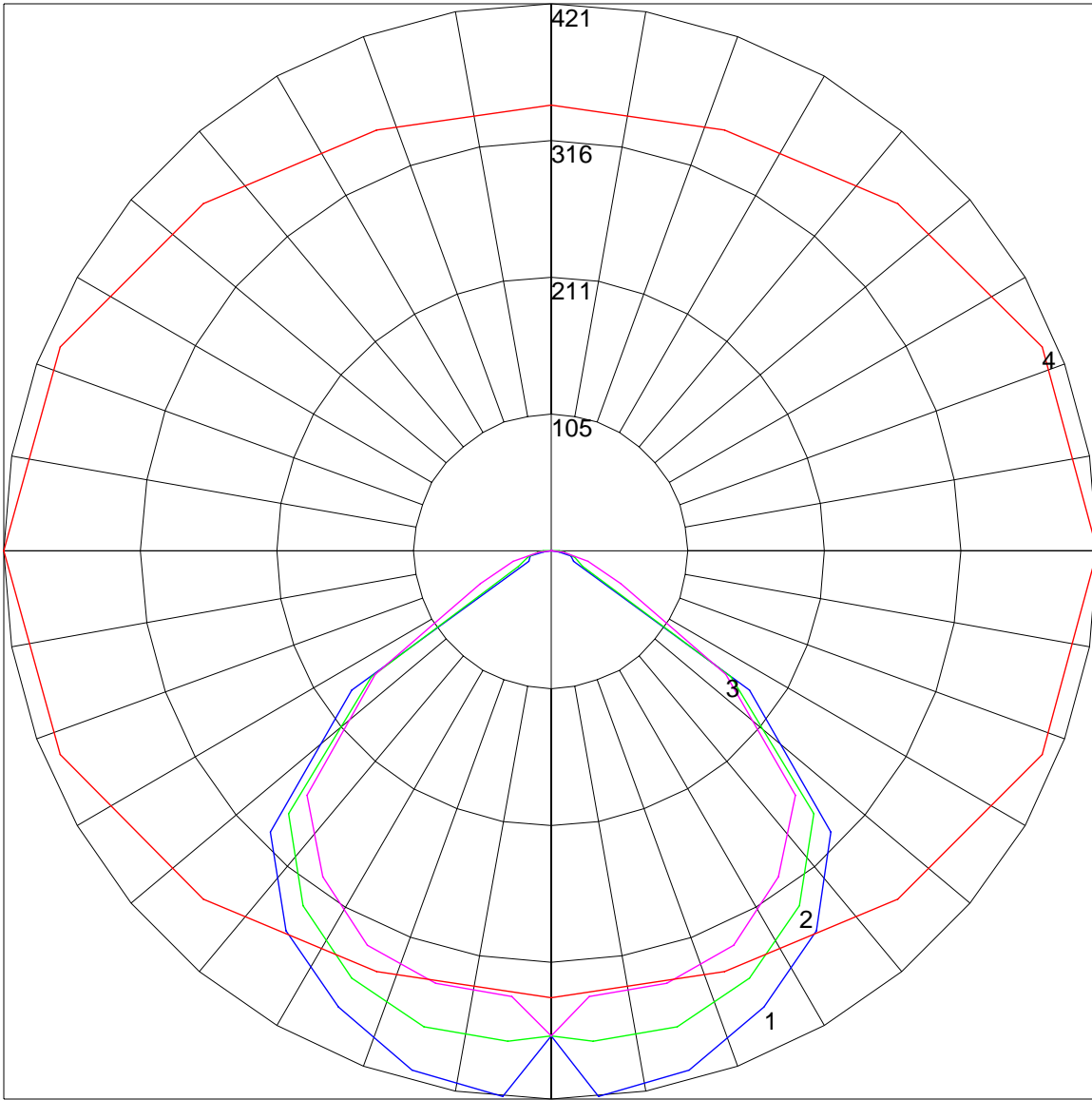
Zone	Lumens	%Lamp	%Fixt
0-30	220.31	N.A.	22.9
0-40	410.92	N.A.	42.7
0-60	820.64	N.A.	85.2
0-90	961.79	N.A.	99.9
90-120	1.03	N.A.	.1
90-130	1.03	N.A.	.1
90-150	1.03	N.A.	.1
90-180	1.03	N.A.	.1
0-180	962.81	N.A.	100

Total Luminaire Efficiency = N.A.%

ZONAL LUMEN SUMMARY

Zone	Lumens
0-10	8.99
10-20	72.16
20-30	139.16
30-40	190.6
40-50	217.76
50-60	191.97
60-70	95.74
70-80	26.31
80-90	19.1
90-100	1.03
100-110	0
110-120	0
120-130	0
130-140	0
140-150	0
150-160	0
160-170	0
170-180	0

POLAR GRAPH



Maximum Candela = 421 Located At Horizontal Angle = 0, Vertical Angle = 5
1 - Vertical Plane Through Horizontal Angles (0 - 180) (Through Max. Cd.) : BLUE
2 - Vertical Plane Through Horizontal Angles (45 - 225) : GREEN
3 - Vertical Plane Through Horizontal Angles (90 - 270) : MAGENTA
4 - Horizontal Cone Through Vertical Angle (5) (Through Max. Cd.) : RED