

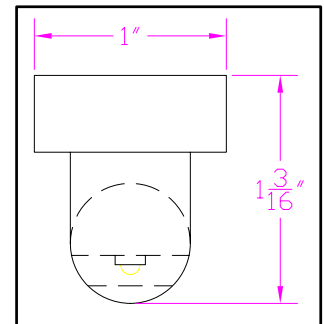
**IES INDOOR REPORT  
PHOTOMETRIC FILENAME : LLI040907G.IES**

**DESCRIPTION INFORMATION (From Photometric File)**

IESNA:LM-63-2002  
 [TEST] LLI 0409-07G  
 [TESTLAB] LIGHT LABORATORY INC  
 [ISSUE DATE] 4/13/2009  
 [MANUFAC] BARTCO LIGHTING  
 [LUMCAT] Re-LT5-G3-5'/U30  
 [LUMINAIRE] 58-15/16"L. X 1"W. X 1-3/16"H. T5 LAMP TYPE LED LINEAR FIXTURE  
 [MORE] 5-1/2" SPACING, 10 COOL WHITE LEDS  
 [MORE] WITH 300mA MODE  
 [BALLASTCAT] BARTCO LTG. Re-DR-UNV-10  
 [BALLAST] 120/277VAC, CONSTANT CURRENT;750mA LED DRIVER  
 [LAMPPOSITION] 0,0  
 [LAMPCAT] COOL WHITE LED  
 [OTHER] INDICATING THE CANDELA VALUES ARE ABSOLUTE AND  
 [MORE] SHOULD NOT BE FACTORED FOR DIFFERENT LAMP RATINGS.  
 [\_INPUT] 120VAC, 116.1mA, 10.97W

**CHARACTERISTICS**

Total Rated Lamp Lumens	N.A. (absolute photometry)
Total Luminaire Efficiency	N.A.
Luminaire Efficacy Rating (LER)	N.A.
Total Luminaire Watts	11
Ballast Factor	1.00
CIE Type	Direct
Spacing Criteria (0-180)	1.44
Spacing Criteria (90-270)	1.28
Spacing Criteria (Diagonal)	1.46
Basic Luminous Shape	Rectangular w/Sides
Luminous Length (0-180)	4.18 ft
Luminous Width (90-270)	0.04 ft
Luminous Height	0.01 ft



**LUMINANCE DATA (cd/sq.m)**

Angle In Degrees	Average 0-Deg	Average 45-Deg	Average 90-Deg
45	17604	14047	12370
55	12628	9204	8346
65	1817	1981	3567
75	2463	1790	2443
85	2873	1457	957

IES INDOOR REPORT  
PHOTOMETRIC FILENAME : LLI040907G.IES

CANDELA TABULATION

	<u>0.0</u>	<u>22.5</u>	<u>45.0</u>	<u>67.5</u>	<u>90.0</u>
<b>0</b>	239	239	239	239	239
<b>5</b>	268	261	239	223	217
<b>15</b>	262	258	241	224	218
<b>25</b>	247	247	231	219	213
<b>35</b>	223	225	212	200	195
<b>45</b>	194	193	182	172	170
<b>55</b>	113	112	103	95	101
<b>65</b>	12	15	18	24	36
<b>75</b>	10	10	12	15	19
<b>85</b>	4	5	6	6	5
<b>90</b>	0	3	4	3	0
<b>95</b>	0	0	0	0	0
<b>180</b>	0	0	0	0	0

**IES INDOOR REPORT**  
**PHOTOMETRIC FILENAME : LLI040907G.IES**

**ZONAL LUMEN SUMMARY**

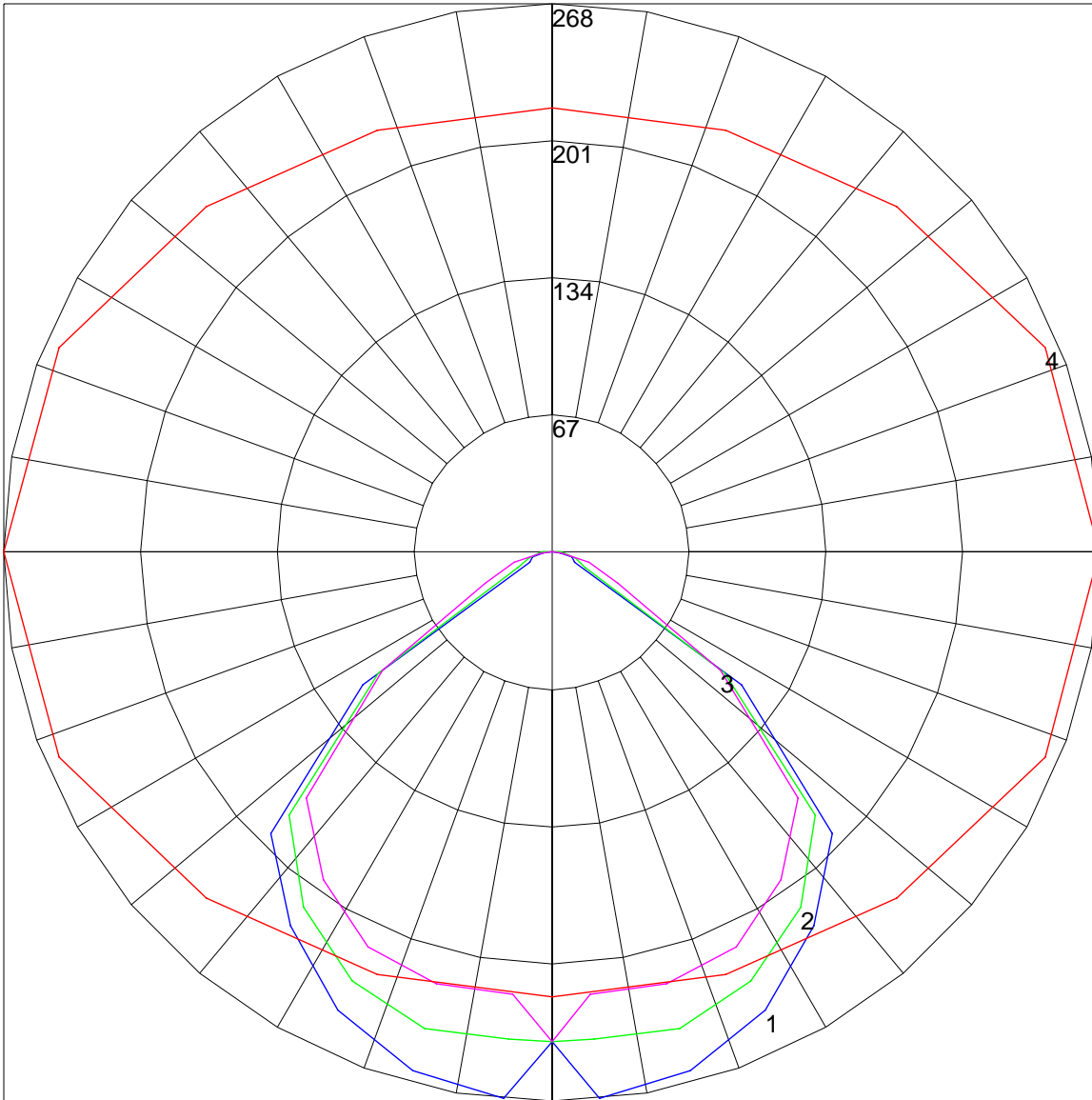
Zone	Lumens	%Lamp	%Fixt
0-30	140.09	N.A.	23
0-40	261.45	N.A.	42.9
0-60	520.24	N.A.	85.4
0-90	608.33	N.A.	99.9
90-120	.68	N.A.	.1
90-130	.68	N.A.	.1
90-150	.68	N.A.	.1
90-180	.68	N.A.	.1
0-180	609.01	N.A.	100

Total Luminaire Efficiency = N.A.%

**ZONAL LUMEN SUMMARY**

Zone	Lumens
0-10	5.74
10-20	45.85
20-30	88.5
30-40	121.37
40-50	138.6
50-60	120.19
60-70	59.04
70-80	17.05
80-90	12
90-100	.68
100-110	0
110-120	0
120-130	0
130-140	0
140-150	0
150-160	0
160-170	0
170-180	0

POLAR GRAPH



Maximum Candela = 268 Located At Horizontal Angle = 0, Vertical Angle = 5  
# 1 - Vertical Plane Through Horizontal Angles (0 - 180) (Through Max. Cd.) : BLUE  
# 2 - Vertical Plane Through Horizontal Angles (45 - 225) : GREEN  
# 3 - Vertical Plane Through Horizontal Angles (90 - 270) : MAGENTA  
# 4 - Horizontal Cone Through Vertical Angle (5) (Through Max. Cd.) : RED