

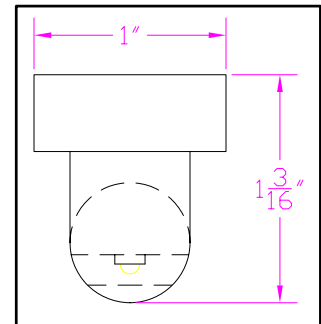
**IES INDOOR REPORT
PHOTOMETRIC FILENAME : LLI040907E.IES**

DESCRIPTION INFORMATION (From Photometric File)

IESNA:LM-63-2002
 [TEST] LLI 0409-07E
 [TESTLAB] LIGHT LABORATORY INC
 [ISSUEDATE] 4/13/2009
 [MANUFAC] BARTCO LIGHTING
 [LUMCAT] Re-LT5-G3-4'/U50
 [LUMINAIRE] 47-1/8"L. X 1"W. X 1-3/16"H. T5 LAMP TYPE LED LINEAR FIXTURE
 [MORE] 5-1/2"SPACING, 8 COOL WHITE LEDS
 [MORE] WITH 500mA MODE
 [BALLASTCAT] BARTCO LTG. Re-DR-UNV-10
 [BALLAST] 120/277VAC, CONSTANT CURRENT;750mA LED DRIVER
 [LAMPPOSITION] 0,0
 [LAMPCAT] COOL WHITE LED
 [OTHER] INDICATING THE CANDELA VALUES ARE ABSOLUTE AND
 [MORE] SHOULD NOT BE FACTORED FOR DIFFERENT LAMP RATINGS.
 [_INPUT] 120VAC, 175.4mA, 17.62W

CHARACTERISTICS

Total Rated Lamp Lumens	N.A. (absolute photometry)
Total Luminaire Efficiency	N.A.
Luminaire Efficacy Rating (LER)	N.A.
Total Luminaire Watts	18
Ballast Factor	1.00
CIE Type	Direct
Spacing Criteria (0-180)	1.38
Spacing Criteria (90-270)	1.32
Spacing Criteria (Diagonal)	1.46
Basic Luminous Shape	Rectangular w/Sides
Luminous Length (0-180)	3.27 ft
Luminous Width (90-270)	0.04 ft
Luminous Height	0.01 ft



LUMINANCE DATA (cd/sq.m)

Angle In Degrees	Average 0-Deg	Average 45-Deg	Average 90-Deg
45	29790	24754	22231
55	24404	19408	17851
65	2706	2952	6965
75	4083	3047	3780
85	4557	2478	1712

IES INDOOR REPORT
PHOTOMETRIC FILENAME : LLI040907E.IES

CANDELA TABULATION

	<u>0.0</u>	<u>22.5</u>	<u>45.0</u>	<u>67.5</u>	<u>90.0</u>
0	335	335	335	335	335
5	363	355	339	322	315
15	349	349	334	322	314
25	329	332	319	311	305
35	298	303	293	284	280
45	257	260	251	240	239
55	171	175	170	163	169
65	14	17	21	35	55
75	13	12	16	20	23
85	5	6	8	7	7
90	0	4	4	3	0
95	0	0	0	0	0
180	0	0	0	0	0

IES INDOOR REPORT
PHOTOMETRIC FILENAME : LLI040907E.IES

ZONAL LUMEN SUMMARY

Zone	Lumens	%Lamp	%Fixt
0-30	194.51	N.A.	22.6
0-40	362.08	N.A.	42.1
0-60	728.74	N.A.	84.7
0-90	859.33	N.A.	99.9
90-120	.75	N.A.	.1
90-130	.75	N.A.	.1
90-150	.75	N.A.	.1
90-180	.75	N.A.	.1
0-180	860.08	N.A.	100

Total Luminaire Efficiency = N.A.%

ZONAL LUMEN SUMMARY

Zone	Lumens
0-10	8.05
10-20	63.99
20-30	122.47
30-40	167.57
40-50	190.78
50-60	175.87
60-70	93.13
70-80	22.32
80-90	15.14
90-100	.75
100-110	0
110-120	0
120-130	0
130-140	0
140-150	0
150-160	0
160-170	0
170-180	0

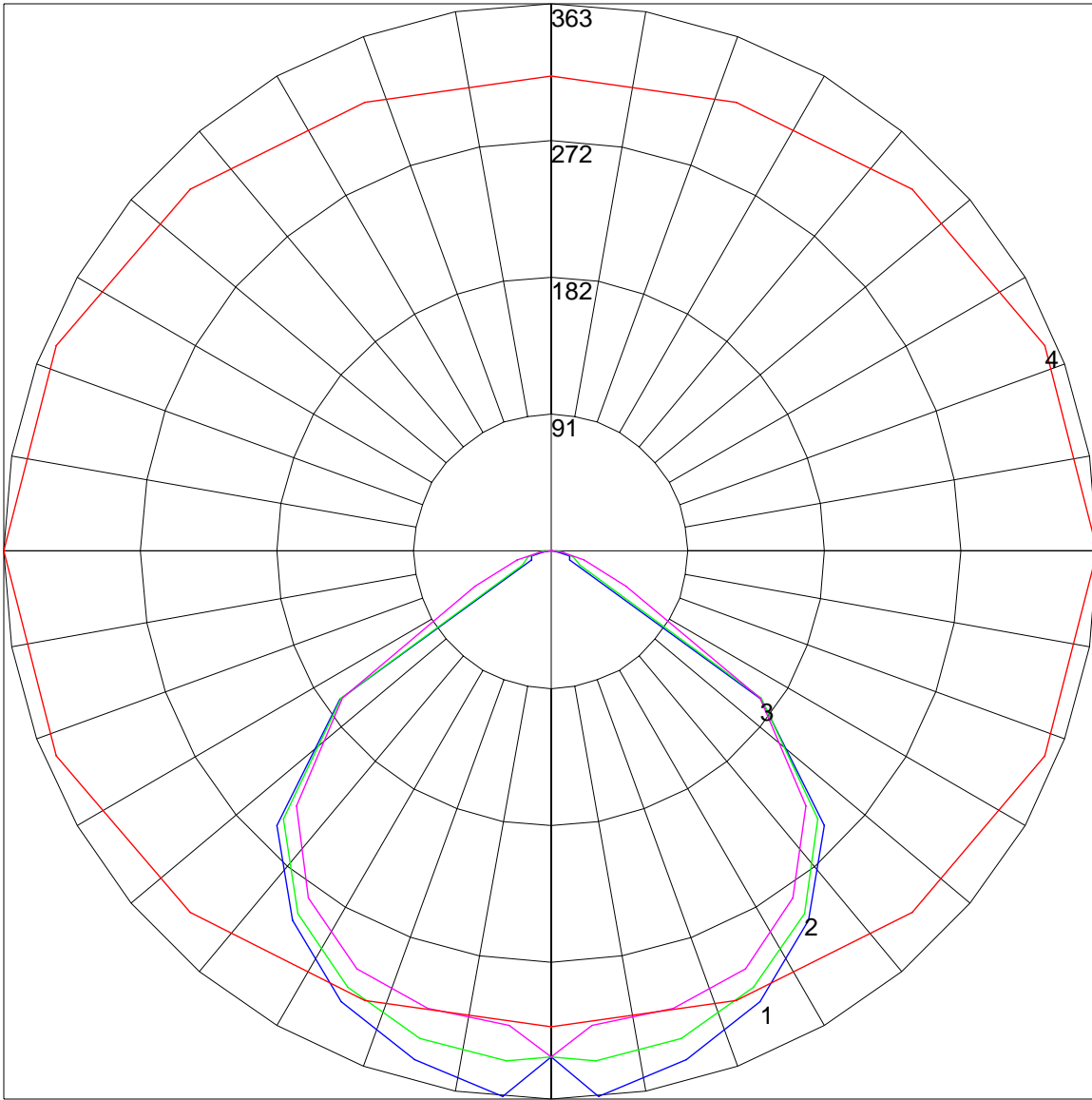
IES INDOOR REPORT
PHOTOMETRIC FILENAME : LLI040907E.IES

COEFFICIENTS OF UTILIZATION - ZONAL CAVITY METHOD

Effective Floor Cavity Reflectance 0.20

RC	80				70				50			30			10			0
	70	50	30	10	70	50	30	10	50	30	10	50	30	10	50	30	10	0
0	-	-	-	-	-	-	-	-	-	-	-	-	-	-	-	-	-	-
1	-	-	-	-	-	-	-	-	-	-	-	-	-	-	-	-	-	-
2	-	-	-	-	-	-	-	-	-	-	-	-	-	-	-	-	-	-
3	-	-	-	-	-	-	-	-	-	-	-	-	-	-	-	-	-	-
4	-	-	-	-	-	-	-	-	-	-	-	-	-	-	-	-	-	-
5	-	-	-	-	-	-	-	-	-	-	-	-	-	-	-	-	-	-
6	-	-	-	-	-	-	-	-	-	-	-	-	-	-	-	-	-	-
7	-	-	-	-	-	-	-	-	-	-	-	-	-	-	-	-	-	-
8	-	-	-	-	-	-	-	-	-	-	-	-	-	-	-	-	-	-
9	-	-	-	-	-	-	-	-	-	-	-	-	-	-	-	-	-	-
10	-	-	-	-	-	-	-	-	-	-	-	-	-	-	-	-	-	-

POLAR GRAPH



Maximum Candela = 363 Located At Horizontal Angle = 0, Vertical Angle = 5
1 - Vertical Plane Through Horizontal Angles (0 - 180) (Through Max. Cd.) : BLUE
2 - Vertical Plane Through Horizontal Angles (45 - 225) : GREEN
3 - Vertical Plane Through Horizontal Angles (90 - 270) : MAGENTA
4 - Horizontal Cone Through Vertical Angle (5) (Through Max. Cd.) : RED