

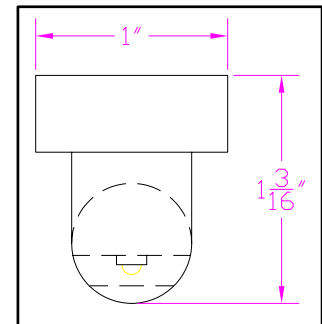
**IES INDOOR REPORT
PHOTOMETRIC FILENAME : LLI040907B.IES**

DESCRIPTION INFORMATION (From Photometric File)

IESNA:LM-63-2002
 [TEST] LLI 0409-07B
 [TESTLAB] LIGHT LABORATORY INC
 [ISSUEDATE] 4/13/2009
 [MANUFAC] BARTCO LIGHTING
 [LUMCAT] Re-LT5-G3-3'/U50
 [LUMINAIRE] 35-1/4"L. X 1"W. X 1-3/16"H. T5 LAMP TYPE LED LINEAR FIXTURE
 [MORE] 5-1/2"SPACING, 6 COOL WHITE LEDS
 [MORE] WITH 500mA MODE
 [BALLASTCAT] BARTCO LTG. Re-DR-UNV-10
 [BALLAST] 120/277VAC, CONSTANT CURRENT;750mA LED DRIVER
 [LAMPPOSITION] 0,0
 [LAMPCAT] COOL WHITE LED
 [OTHER] INDICATING THE CANDELA VALUES ARE ABSOLUTE AND
 [MORE] SHOULD NOT BE FACTORED FOR DIFFERENT LAMP RATINGS.
 [_INPUT] 120VAC, 143.5mA, 13.87W

CHARACTERISTICS

Total Rated Lamp Lumens	N.A. (absolute photometry)
Total Luminaire Efficiency	N.A.
Luminaire Efficacy Rating (LER)	N.A.
Total Luminaire Watts	14
Ballast Factor	1.00
CIE Type	Direct
Spacing Criteria (0-180)	1.32
Spacing Criteria (90-270)	1.32
Spacing Criteria (Diagonal)	1.44
Basic Luminous Shape	Rectangular w/Sides
Luminous Length (0-180)	2.35 ft
Luminous Width (90-270)	0.04 ft
Luminous Height	0.01 ft



LUMINANCE DATA (cd/sq.m)

Angle In Degrees	Average 0-Deg	Average 45-Deg	Average 90-Deg
45	31536	26707	24948
55	24750	20288	18936
65	2679	2927	6864
75	3476	2906	4111
85	3751	2146	1699

IES INDOOR REPORT
PHOTOMETRIC FILENAME : LLI040907B.IES

CANDELA TABULATION

	<u>0.0</u>	<u>22.5</u>	<u>45.0</u>	<u>67.5</u>	<u>90.0</u>
0	270	270	270	270	270
5	280	279	275	266	263
15	274	273	268	263	259
25	253	257	254	252	250
35	228	231	231	229	226
45	196	194	195	193	193
55	125	126	128	127	129
65	10	12	15	26	39
75	8	8	11	14	18
85	3	4	5	5	5
90	0	3	3	2	0
95	0	0	0	0	0
180	0	0	0	0	0

IES INDOOR REPORT
PHOTOMETRIC FILENAME : LLI040907B.IES

ZONAL LUMEN SUMMARY

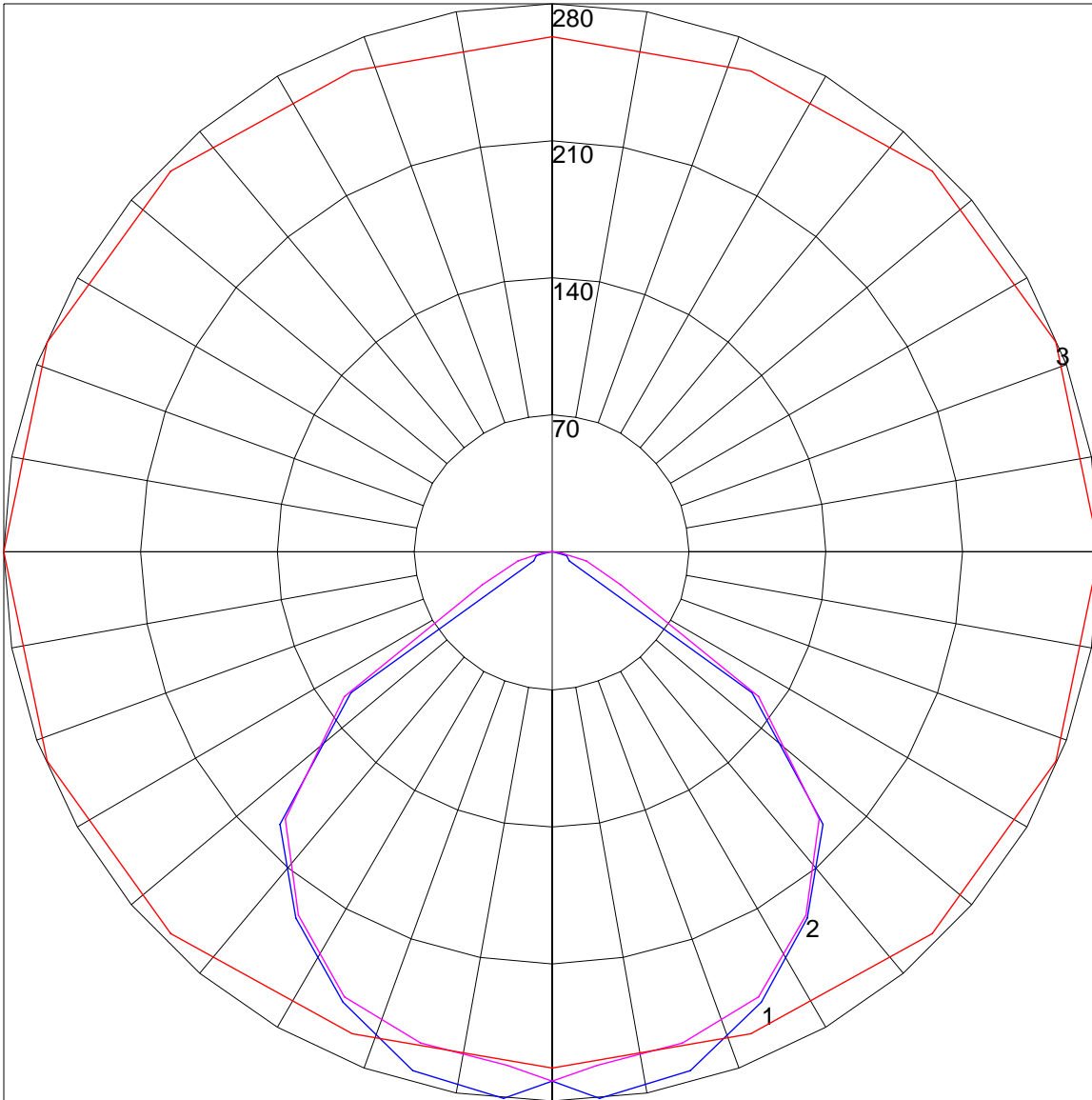
Zone	Lumens	%Lamp	%Fixt
0-30	155.52	N.A.	23.3
0-40	287.8	N.A.	43.1
0-60	571.63	N.A.	85.6
0-90	667.34	N.A.	99.9
90-120	.55	N.A.	.1
90-130	.55	N.A.	.1
90-150	.55	N.A.	.1
90-180	.55	N.A.	.1
0-180	667.89	N.A.	100

Total Luminaire Efficiency = N.A.%

ZONAL LUMEN SUMMARY

Zone	Lumens
0-10	6.49
10-20	51.4
20-30	97.63
30-40	132.28
40-50	149.12
50-60	134.71
60-70	69.42
70-80	15.89
80-90	10.41
90-100	.55
100-110	0
110-120	0
120-130	0
130-140	0
140-150	0
150-160	0
160-170	0
170-180	0

POLAR GRAPH



Maximum Candela = 280 Located At Horizontal Angle = 0, Vertical Angle = 5
1 - Vertical Plane Through Horizontal Angles (0 - 180) (Through Max. Cd.) : BLUE
2 - Vertical Plane Through Horizontal Angles (90 - 270) : MAGENTA
3 - Horizontal Cone Through Vertical Angle (5) (Through Max. Cd.) : RED