

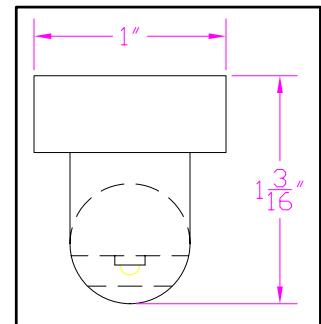
**IES INDOOR REPORT
PHOTOMETRIC FILENAME : LLI040907E1.IES**

DESCRIPTION INFORMATION (From Photometric File)

IESNA:LM-63-2002
 [TEST] LLI 0409-07E1
 [TESTLAB] LIGHT LABORATORY INC
 [ISSUE DATE] 4/13/2009
 [MANUFAC] BARTCO LIGHTING
 [LUMCAT] Re-LT5-G3-2'/U50
 [LUMINAIRE] 23-9/16"L. X 1"W. X 1-3/16"H. T5 LAMP TYPE LED LINEAR FIXTURE
 [MORE] 5-1/2"SPACING, 4 COOL WHITE LEDS
 [MORE] WITH 500mA MODE
 [BALLASTCAT] BARTCO LTG. Re-DR-UNV-10
 [BALLAST] 120/277VAC, CONSTANT CURRENT;750mA LED DRIVER
 [LAMPPOSITION] 0,0
 [LAMPCAT] COOL WHITE LED
 [OTHER] INDICATING THE CANDELA VALUES ARE ABSOLUTE AND
 [MORE] SHOULD NOT BE FACTORED FOR DIFFERENT LAMP RATINGS.
 [_ CONVERT] THIS FILE IS GENERATED FROM LLI 040907E.IES
 [_ INPUT] 120VAC, 87.7mA, 8.81W

CHARACTERISTICS

Total Rated Lamp Lumens	N.A. (absolute photometry)
Total Luminaire Efficiency	N.A.
Luminaire Efficacy Rating (LER)	N.A.
Total Luminaire Watts	9
Ballast Factor	1.00
CIE Type	Direct
Spacing Criteria (0-180)	1.38
Spacing Criteria (90-270)	1.32
Spacing Criteria (Diagonal)	1.46
Basic Luminous Shape	Rectangular w/Sides
Luminous Length (0-180)	1.43 ft
Luminous Width (90-270)	0.04 ft
Luminous Height	0.01 ft



LUMINANCE DATA (cd/sq.m)

Angle In Degrees	Average 0-Deg	Average 45-Deg	Average 90-Deg
45	34060	28124	25524
55	27585	22120	20289
65	3068	3201	8109
75	4247	3463	4134
85	3995	2804	2237

IES INDOOR REPORT
PHOTOMETRIC FILENAME : LLI040907E1.IES

CANDELA TABULATION

	<u>0.0</u>	<u>22.5</u>	<u>45.0</u>	<u>67.5</u>	<u>90.0</u>
0	168	168	168	168	168
5	181	178	170	161	158
15	175	175	167	161	157
25	164	166	160	155	153
35	149	152	146	142	140
45	129	130	125	120	120
55	85	88	85	82	84
65	7	9	10	18	28
75	6	6	8	10	11
85	2	3	4	4	4
90	0	2	2	1	0
95	0	0	0	0	0
180	0	0	0	0	0

IES INDOOR REPORT
PHOTOMETRIC FILENAME : LLI040907E1.IES

ZONAL LUMEN SUMMARY

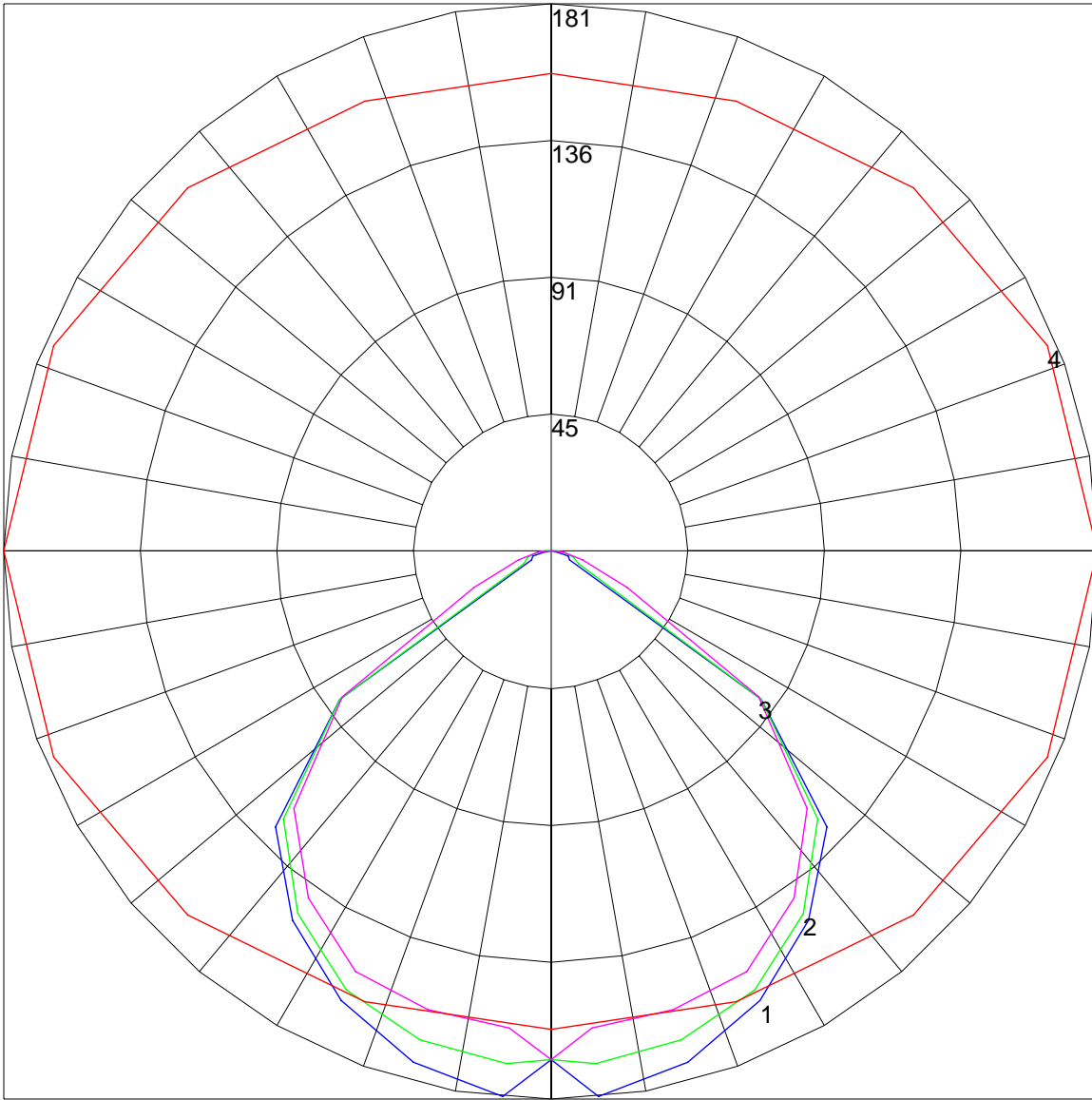
Zone	Lumens	%Lamp	%Fixt
0-30	97.34	N.A.	22.6
0-40	181.12	N.A.	42.1
0-60	364.51	N.A.	84.7
0-90	429.98	N.A.	99.9
90-120	.34	N.A.	.1
90-130	.34	N.A.	.1
90-150	.34	N.A.	.1
90-180	.34	N.A.	.1
0-180	430.32	N.A.	100

Total Luminaire Efficiency = N.A.%

ZONAL LUMEN SUMMARY

Zone	Lumens
0-10	4.04
10-20	32.03
20-30	61.27
30-40	83.79
40-50	95.39
50-60	87.99
60-70	46.71
70-80	11.19
80-90	7.57
90-100	.34
100-110	0
110-120	0
120-130	0
130-140	0
140-150	0
150-160	0
160-170	0
170-180	0

POLAR GRAPH



Maximum Candela = 181 Located At Horizontal Angle = 0, Vertical Angle = 5
1 - Vertical Plane Through Horizontal Angles (0 - 180) (Through Max. Cd.) : BLUE
2 - Vertical Plane Through Horizontal Angles (45 - 225) : GREEN
3 - Vertical Plane Through Horizontal Angles (90 - 270) : MAGENTA
4 - Horizontal Cone Through Vertical Angle (5) (Through Max. Cd.) : RED