

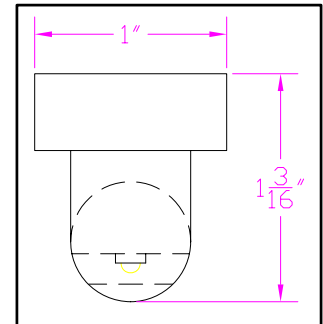
**IES INDOOR REPORT  
PHOTOMETRIC FILENAME : LLI040907D1.IES**

**DESCRIPTION INFORMATION (From Photometric File)**

IESNA:LM-63-2002  
 [TEST] LLI 0409-07D1  
 [TESTLAB] LIGHT LABORATORY INC  
 [ISSUE DATE] 4/13/2009  
 [MANUFAC] BARTCO LIGHTING  
 [LUMCAT] Re-LT5-G3-2'/U30  
 [LUMINAIRE] 23-9/16"L. X 1"W. X 1-3/16"H. T5 LAMP TYPE LED LINEAR FIXTURE  
 [MORE] 5-1/2"SPACING, 4 COOL WHITE LEDS  
 [MORE] WITH 300mA MODE  
 [BALLASTCAT] BARTCO LTG. Re-DR-UNV-10  
 [BALLAST] 120/277VAC, CONSTANT CURRENT;750mA LED DRIVER  
 [LAMPPOSITION] 0,0  
 [LAMPCAT] COOL WHITE LED  
 [OTHER] INDICATING THE CANDELA VALUES ARE ABSOLUTE AND  
 [MORE] SHOULD NOT BE FACTORED FOR DIFFERENT LAMP RATINGS.  
 [\_ CONVERT] THIS FILE IS GENERATED FROM LLI 040907D.IES  
 [\_ INPUT] 120VAC, 49.0mA, 4.55W

**CHARACTERISTICS**

Total Rated Lamp Lumens	N.A. (absolute photometry)
Total Luminaire Efficiency	N.A.
Luminaire Efficacy Rating (LER)	N.A.
Total Luminaire Watts	5
Ballast Factor	1.00
CIE Type	Direct
Spacing Criteria (0-180)	1.40
Spacing Criteria (90-270)	1.32
Spacing Criteria (Diagonal)	1.46
Basic Luminous Shape	Rectangular w/Sides
Luminous Length (0-180)	1.43 ft
Luminous Width (90-270)	0.04 ft
Luminous Height	0.01 ft



**LUMINANCE DATA (cd/sq.m)**

Angle In Degrees	Average 0-Deg	Average 45-Deg	Average 90-Deg
45	21123	17549	15740
55	17849	14053	13043
65	2191	2241	3765
75	2832	2164	3006
85	1997	1402	1118

IES INDOOR REPORT  
PHOTOMETRIC FILENAME : LLI040907D1.IES

CANDELA TABULATION

	<u>0.0</u>	<u>22.5</u>	<u>45.0</u>	<u>67.5</u>	<u>90.0</u>
<b>0</b>	103	103	103	103	103
<b>5</b>	110	110	104	100	97
<b>15</b>	107	108	103	98	96
<b>25</b>	102	102	98	95	94
<b>35</b>	93	93	90	87	87
<b>45</b>	80	80	78	75	74
<b>55</b>	55	55	54	52	54
<b>65</b>	5	5	7	9	13
<b>75</b>	4	4	5	6	8
<b>85</b>	1	2	2	2	2
<b>90</b>	0	1	1	1	0
<b>95</b>	0	0	0	0	0
<b>180</b>	0	0	0	0	0

**IES INDOOR REPORT**  
**PHOTOMETRIC FILENAME : LLI040907D1.IES**

**ZONAL LUMEN SUMMARY**

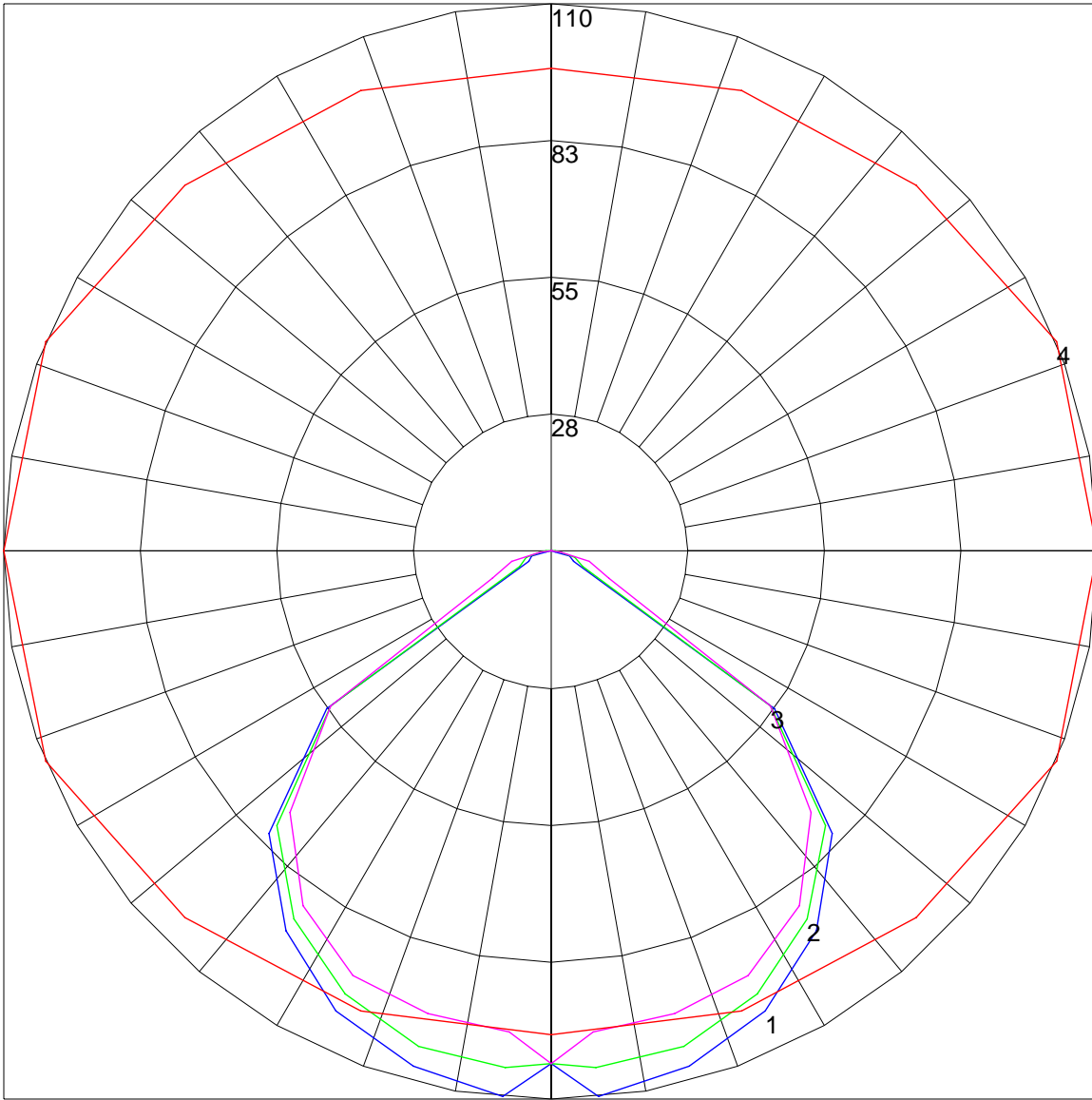
Zone	Lumens	%Lamp	%Fixt
0-30	59.79	N.A.	22.5
0-40	111.33	N.A.	41.9
0-60	225.4	N.A.	84.8
0-90	265.63	N.A.	99.9
90-120	.21	N.A.	.1
90-130	.21	N.A.	.1
90-150	.21	N.A.	.1
90-180	.21	N.A.	.1
0-180	265.84	N.A.	100

Total Luminaire Efficiency = N.A.%

**ZONAL LUMEN SUMMARY**

Zone	Lumens
0-10	2.48
10-20	19.68
20-30	37.62
30-40	51.54
40-50	58.96
50-60	55.11
60-70	29.11
70-80	6.56
80-90	4.56
90-100	.21
100-110	0
110-120	0
120-130	0
130-140	0
140-150	0
150-160	0
160-170	0
170-180	0

POLAR GRAPH



Maximum Candela = 110 Located At Horizontal Angle = 0, Vertical Angle = 5  
# 1 - Vertical Plane Through Horizontal Angles (0 - 180) (Through Max. Cd.) : BLUE  
# 2 - Vertical Plane Through Horizontal Angles (45 - 225) : GREEN  
# 3 - Vertical Plane Through Horizontal Angles (90 - 270) : MAGENTA  
# 4 - Horizontal Cone Through Vertical Angle (5) (Through Max. Cd.) : RED